

DATA ANALYSIS
June 2024

- Student citizenship has increased by 6.1%
- Education quality is up 20.5%
- Parental involvement is up by 13.5%
- Our School Survey reports indicate a 5% increase in feeling safe at school and a 3% increase in interest and motivation
- AREAS FOR GROWTH
- Student anxiety level 8% higher than the national average based upon OurSchool surveys.
- 21% of our students require intensive literacy support as they are at risk.

SCHOOL FOCUS (Sept 2024)

- We will be focusing on the Regulated Classroom, and focusing on student mental health.
- Studying the Seven Habits as it relates to Leader in Me.
- We will continue to enhance our literacy strategies.
- Introduce Positive Behavioral Interventions and Supports. (PBIS)

DATA ANALYSIS
June 2025

Year End Reflections

2024-2025 Greely Road School Professional Learning Planning Cycle

- DIVISION PRIORITIES**
1. Promote Growth & Success for all Students
 2. Maintain Safe & Caring Learning Environment & Supports
 3. Effective Stakeholder Engagement
 4. Strengthen Quality Teaching & Leading

- Collaborative Response Model
- Collaborative Implementation Time
- Division Initiative time
- Positive Behavioural Intervention and Supports
- Collaborative Implementation time based around school based learning
- Mental Health

- Division Collaborative Review time
- Collaborative Implementation Time
- Review on Leader in Me, GANT Chart for the following year.
- Division Initiative time
- PLF Planning as a team 2025/2026
- Collaborative Implementation time based around school based learning
- Mental Health

- Division Collaborative time
- Collaborative Implementation Time
- Division Initiative time
- Autism Understanding and Strategies part two.
- Collaborative Implementation time based around school based learning
- Mental Health

- Collaborative Implementation Time
- Implementation Review Of LIM in the School.
- Division Initiative time
- Collaborative Response Model Literacy
- Collaborative Implementation time based around school based learning
- Mental Health

- Division Collaborative time (online)
- Collaborative Implementation Time
- Positive Behavioral Intervention Supports Training or Division Initiative time
- Collaborative Response Model Literacy
- Collaborative Implementation time based around school based learning
- Mental Health

- Division Collaborative time
- Collaborative Implementation Time
- Division Initiative time
- Habit 7 Leader In Me
- Collaborative Implementation time based around school based learning
- Mental Health

June 06
School-Based

May 2
30min Collab Share at Schools
School-Based

April 4
In Person 90min Div Collab
School-Based

March 28
School-Based

March 14
Online 60min Div Collab
School-Based

February 14
In Person 90min Div Collab
School-Based

September 20
In Person 90min Div Collab
School-Based

Oct 11
School-Based

October 25
Online 60min Div Collab
School-Based

November 22
In Person 90min Div Collab
School-Based

December 6
School-Based

December 20
School-Based

January 24
Online 60min Div Collab
School-Based

- Division Collaborative time
- Collaborative Implementation Time
- Division Initiative time (Habit One if no Division Directed Learning)
- Numeracy Stations.
- Collaborative Implementation time based around school based learning
- Mental Health

- Collaborative Implementation Time
- Habit 2 Leader in Me
- Division Initiative time
- Literacy Based CRM
- Collaborative Implementation time based around school based learning
- Mental Health

- Division Collaborative time (online)
- Collaborative Implementation Time
- Habit 3 Leader in Me or Division Initiative time
- Positive Behavioral Intervention Supports Training
- Collaborative Implementation time based around school based learning
- Mental Health

- Division Collaborative time
- Collaborative Implementation Time
- Division Initiative time
- Autism Strategies and Skills through SPARK for Autism learning.
- Collaborative Implementation time based around school based learning
- Mental Health

- Collaborative Implementation Time
- Habit 4 Leader in Me
- Division Initiative time (Classroom application of Habit 4)
- Collaborative Response Model
- Collaborative Implementation time based around school based learning
- Mental Health

- Leader in Me Habit 5
- Collaborative Implementation Time
- Division Initiative time
- PBIS.
- Collaborative Implementation time based around school based learning
- Mental Health

- Division Collaborative time (online)
- Collaborative Implementation Time
- Positive Behavioral Intervention Supports Training or Division Initiative time
- Habit 6 Leader In Me
- Collaborative Implementation time based around school based learning.
- Mental Health

- ✓ Fostering Effective Relationships
- ✓ Modeling Commitment to Professional Learning
- ✓ Embodying Visionary Leadership
- ✓ Leading a Learning Community
- ✓ Providing Instructional Leadership
- ✓ Supporting the Application of Foundational Knowledge about FNMI
- ✓ Developing Leadership Capacity
- ✓ Managing School Operations and Resources
- ✓ Understanding and Responding to the Larger Societal Context

- ✓ Fostering Effective Relationships
- ✓ Engaging in Career-Long Learning
- ✓ Demonstrating a Professional Body of Knowledge
- ✓ Establishing Inclusive Learning Environments
- ✓ Applying Foundational Knowledge about First Nations, Métis, and Inuit
- ✓ Adhering to Legal Frameworks and Policies



School Name

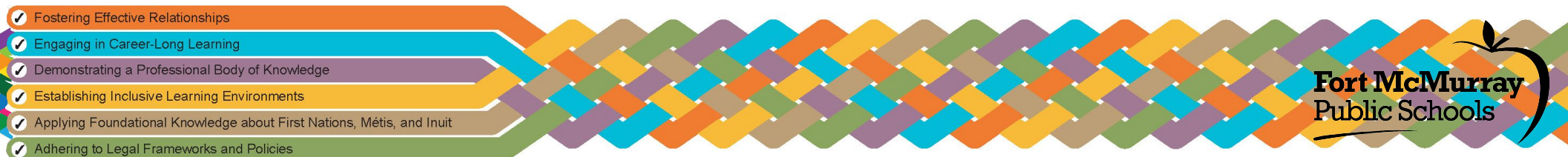
Professional Learning Cycle

Detailed Information

Data Analysis (June 2022)

School Focus (Sept 2022)

Data Analysis (June 2023)



- ✓ Fostering Effective Relationships
- ✓ Engaging in Career-Long Learning
- ✓ Demonstrating a Professional Body of Knowledge
- ✓ Establishing Inclusive Learning Environments
- ✓ Applying Foundational Knowledge about First Nations, Métis, and Inuit
- ✓ Adhering to Legal Frameworks and Policies

School Name

Professional Learning Cycle

Detailed Information

Sept 02		Feb 17	8:30 to 9:30 - 60 Minute Division-Wide Grade Collaboration Time
Sept 16	8:30 to 10:00 - 90 Minute Division-Wide Grade Collaboration Time	Mar 10	
Oct 21	8:30 to 9:30 - 60 Minute Division-Wide Grade Collaboration Time	Mar 24	8:30 to 9:30 - 60 Minute Division-Wide Grade Collaboration Time
Nov 18	8:30 to 9:30 - 60 Minute Division-Wide Grade Collaboration Time	Apr 21	8:30 to 9:30 - 60 Minute Division-Wide Grade Collaboration Time
Dec 02	8:30 to 9:30 - 60 Minute Division-Wide Grade Collaboration Time	May 05	
Dec 16		Jun 02	
Jan 27	8:30 to 9:30 - 60 Minute Division-Wide Grade Collaboration Time		

